



CATALOG 2025



EduMed
Partners

The final step to your succes



Publication Date: 7/25/2025, Edition 1

www.edumed-partners.com

TABLE OF CONTENTS

SECTION NAME	PAGE NUMBER	SECTION NAME	PAGE NUMBER
Academic Calendar	10	Our History and Purpose	3
Admissions Policies	4	Owners and Officers	3
Alcohol and Drug Policy	5	Parking	6
Attendance Policy	4	Passport Application	7
Break Room	5	Pricing of Services	7
Cancellation Refund	4	Refund Policy	4
Career Placement Assistance Pricing	7	Resume Writing Pricing	7
Cost-Pricing	7	Satisfactory Academic Progress Policy	7
Course Descriptions English	8-9	Services	10
CPR Pricing	7	Smoking	6
DACA Renewals	7	Standards of Conduct	5
Dismissal from School	5	Student Advisement and Tutoring	5
English As A Second Language	8	Student/ Instructor Ratio for	6
Facility Address and Telephone	3	Visitors to the Campus	5
Faculty and Staff	11		
Grading Scale	4		
Graduation Requirements ESL	4		
Incident Reporting	5-6		
Inclement Weather Policy	5		
Laboratory Settings	6		
Location	4		
Mission Statement	3		

907 RIVERGATE PARKWAY
 SUITE D2
 GOODLETTSVILLE, TN 37072
 615-528-5444

OWNERS STATEMENT:

Nashville English is owned by EduMed Partners, LLC with its corporate headquarters based in Nashville, TN. EduMed feels strongly everyone deserves to have conversational English taught by those who know the language in order to be successful. Nashville English hires Americans who have a solid grasp on English grammar and know how it is to be spoken. EduMed believes in order to take you to the next level in speaking, communicating and teaching the English language there must be a priority set. Nashville English has a passion to help make this a reality.

Our History and Purpose:

EduMed Partners LLC is a group of professionals who possess the experience and knowledge to provide the best training in our market area. A group of educators that believe teaching through real experience and hands-on training are the most effective way of learning for successful entrance into the work force. A caring and talented group that understands the needs of the markets we serve.

Mission Statement:

- To provide students with a dynamic training experience which focuses on instruction through active learning techniques.
- To equip students with elevated levels of technical and communication skills in order to succeed in their chosen career.
- To aid students in obtaining entry-level positions within the community.
- Furthermore, to provide our market area with educated and highly skilled professionals.

Owners and Officers



Kleber Molina, MD
President/CEO

Sandra Overton, MT, MBA
Vice President/CFO

LOCATION:

EduMed is located in Nashville, Tennessee. Classes are all virtual and hands-on training is provided in house. Address: 907 Rivergate Parkway, Suite D2, Goodlettsville, TN 37072.

Admissions Policies

- Applicants must complete an online registration and pay in advance for any services EduMed provides.

CANCELLATION REFUND POLICY:

- Refunds are only provided when a service is cancelled.

Grading Scale

ESL Students receive a numerical grade as indicated on the chart below.

96 -100	A
85 - 95	B
75 – 84	C
74 and below	F

Attendance Policy:

All attendance will be recorded for ESL students accordingly.

Graduation Requirements for ESL:

Students must prove they have completed their level of ESL based on EduMed standards.

Satisfactory Progress and Grading Scale for ESL Students:

A final grade of 75% or higher is required for each level of completion.

Standards of Conduct

- Students are to be respectful to classmates, administration, faculty members of the EduMed-Partners.
- Cursing or Inappropriate Language will not be tolerated.
- Physical Altercations and weapons will not be tolerated. Students may be dismissed from the program immediately.
- Cheating/ Plagiarism will not be tolerated. Any student who is caught with cheating / Plagiarism will be given a grade of "0" for the assignment. Students may be suspended or dismissed from the institute.
- Cell phones must be off during class.
- Follow Dress Code
- Willful Destruction of School Property

Dismissal from School

All students are expected to be professional and conduct themselves as responsible adults, attend class regularly, and to maintain a satisfactory level of academic achievement. EduMed-Partners, LLC reserves the right to dismiss or suspend any student who:

- Exhibits conduct found by the administration to be detrimental to the following students, other individuals. The community, or the school, as outlined in the "Conduct" section of this catalog.
- Fails to maintain satisfactory academic progress.
- Fails to meet attendance policies.
- Does not meet financial obligations to the school.

Alcohol and Drug Policy

Alcohol or any substance used in any way other than prescribed by a medical professional is prohibited on campus and during the externship.

Drug screens may be mandatory upon reasonable suspicion which will be determined by the Campus Director. If the results return a positive finding, the student will be suspended or expelled at the discretion of the institution.

Student Advisement and Tutoring

Advising and Tutoring is available upon request. All instructors are available to tutor as well as the Program Director. All requests for tutoring should be presented to the Director of Education or Program Director.

Inclement Weather Policy

EduMed Partners, LLC will announce school closing due to weather or unforeseen circumstances on social media such as Facebook.

Visitors to the Campus

All school visitors must see the Front Office Receptionist. Visitors may only be allowed on the campus or in the classrooms with permission by the Director of Education.

*Please arrange childcare prior to class. Children will not be allowed to wait on campus for the student to attend class.

General Information

Breakroom

The student break room is available during regular business hours. EduMed-Partners asks all students

to respect others while in the break room and refrain from any loud or distracting noises or activities.

Parking

Students may park within the complex between the 2 dumpsters only. To be courteous, we ask that students avoid parking directly in front of the other tenant's front entrance. Handicap spaces are available for those in need.

Smoking

Smoking is permitted in designated areas left of the main entrance. We ask all students and faculty to be courteous and dispose of cigarettes appropriately.

Classroom Student / Instructor Ratio

Student / Instructor ratio for lecture is 40:1. Laboratory Student / Instructor ratio is 20:1.

Laboratory Settings:

A. General Rules:

In order to maintain a safe and clean laboratory environment, the following rules must be followed in the laboratory setting:

1. No food or drink
2. Students may not apply makeup (including lip balm) or lotion in the laboratory
3. Maintain Dress Code Policy
4. Students may not insert any eye drops or contact lenses within the laboratory area.

B. Accidental Dirty Needle Stick:

- Notify Instructor Immediately.
- Wash area with warm water and soap
- Bandage if needed
- Students will be instructed to go to the school provider or nearest Emergency Room
- Upon return, the student must present a superbill or documentation from the facility that provided service.

Incident Reporting

EduMed staff and administration strive to provide each student and visitor with a safe welcoming environment. If during your enrollment at EduMed you have an accident or incident at any time see your instructor for help filing out an incident form. This form is used to improve your experience and ensure accidents are kept at a minimum.

PRICING

	HOURS	COST
ESL CLASSES		
ALL LEVELS (1,2,3,4,5,6)	6 HOURS	\$100
	20 HOURS	\$200
TOEFL/CAMBRIDGE PREP	BASED ON STUDENT NEED	

ALL OTHER SERVICES

NHA TEST PREP	4 HOURS MINIMUM	\$300
MA TEST PREP	8 HOURS	\$500
PHLEBOTOMY TEST PREP	8 HOURS	\$500
EKG TEST PREP	8 HOURS	\$500

NHA TESTING CENTER

MA NHA TESTING	\$250
PHLEBOTOMY NHA TESTING	\$200
EKG NHA TESTING	\$200

PLACEMENT SERVICES

JOB SHADOWING PLACEMENT	\$500
----------------------------	-------

JOB PLACEMENT-ANY JOB	\$100
-----------------------	-------

CPR

CPR TESTING AND RENEWAL	\$80
-------------------------	------

DACA

DACA RENEWAL	\$200
--------------	-------

PASSPORT

PASSPORT APPLICATION AND RENEWAL	\$100
----------------------------------	-------

RESUMES

RESUME	\$100
--------	-------

Course Descriptions

English As A Second Language:

ESL101: Beginners ESL

Prerequisites: None

Contact Hours: 20

This course will focus on the basic sounding of the alphabet in preparing the vocal cords and muscles of the tongue to perform sounds of the English Language. This course also teaches the phonetic rules of the English Language. This course will help to create, in the brain, a new file for the English Language. This course is necessary to build the foundations required to speak the English Language correctly. If we compared learning English to baking a cookie, Level I will be the first ingredient required for a successful product.

Students will learn simple commands and sentences containing days of week, months and greetings. Students will be introduced to prepositions and pronouns. This course will give the students the habit of speaking the English Language and prepare them for conversations.

ESL102: Intermediate ESL

Prerequisites: Completion of Level 1

Contact Hours: 20

This course will review the phonetics and rules of the English Language. It will also focus on increasing students' conversations skills and types of interactions. Students will enhance their listening skills in the English language and develop ability to maintain multiple sentence conversations. Students will also learn to identify the main points and details of written and conversational speech.

Students will learn pronouns, tenses, prepositions (in, on, under) and correct way to use in a sentence. Students will begin using words with four syllables and demonstrate understanding of over and under. Students will also begin using descriptive words in adjectives and adverbs as well as opposites. During this time the students will be able to master sentences nine words long.

ESL103: Advanced ESL

Prerequisites: Completion of Levels 1 and 2

Contact Hours: 20

The students will review conversation skills and types of interactions. Students obtain the skill set to follow simple commands. This course will also introduce a large list of nouns which will increase their English Vocabulary to between 150- and 300-words allowing students to participate in conversations with English speakers. These conversations will include readings, days of the week, months, and greetings.

ESL104: Advanced ESL

Prerequisites: Completion of Levels 1, 2, and 3

Contact Hours: 20

The students will review skills to follow simple commands. Students move from basic to intermediate English proficiency. This level will focus on expanding vocabulary, improving sentence structure and building fluency in everyday conversations. Students will begin to express opinions and details. Participate in conversations, follow multi-step directions, read and understand longer paragraphs and expand vocabulary. Students will begin using past, present and future tenses as well as writing simple paragraphs. Students will be introduced to present perfect and past perfect tenses, auxiliary verbs, comparatives and filling out forms.

ESL105: Advanced ESL

Prerequisites: Completion of Levels 1, 2, 3 and 4

Contact Hours: 20

The students will review the intermediate English presented in level 4. This level moves to high intermediate, where they will build on previously learned skills to become more fluent, accurate, and confident. Students will begin expressing opinions, understanding longer phrases, and begin usage of idioms and figurative language. Students will apply tone, making inferences, drawing conclusions, and summarizing readings. Students begin applying body language and connecting it with speaking of the English Language. Students will begin using the passive voice, conditionals (1st, 2nd, and 3rd), and articles. In this level students will begin developing critical thinking.

ESL106: Advanced ESL

Prerequisites: Completion of Levels 1, 2, 3, 4 and 5

Contact Hours: 20

The students will review the high intermediate English presented in level 5. Students will move to advanced English. In this level students will refine fluency and accuracy in all areas of the English language, with a focus on academic, professional and real-world communication. Students will present complex ideas clearly, use idioms, phrasal verbs, understand native-level speech including fast-paced English. Students will be able to read and analyze simple complex texts, write well-structured sentences with advanced grammar. Students will use verb tenses, auxiliary verbs, as well as active versus passive voice for tone and emphasis. Students will apply critical thinking in English.

TOEFL AND CAMBRIDGE PREP

Contact Hours is dependent upon student needs.

This course prepares the student to pass the TOEFL and Cambridge examinations required by USA Universities

prior to entrance. This class also preps students to pass exams as required by Universities and Departments of Education in Countries around the world. This course takes you through each part of the TOEFL and Cambridge examinations.

SERVICES:

Job Placement
NHA Test Site
NHA Exam Prep
Job Shadowing
CPR
Translations
DACA Renewal
Passport Applications
Resumes

ACADEMIC CALENDAR

SCHEDULE 2025

ACADEMIC CALENDAR
2025
ENGLISH AS A SECOND LANGUAGE
START DATES
AUGUST 4TH
SEPTEMBER 22ND
NOVEMBER 17TH

Faculty & Staff

Kleber Molina, MD

OWNER, CEO, Campus Director, DOE - Full Time
State University Cuenca (Ecuador)



Sandra Overton, MT, MBA

OWNER, VP, CFO, - Full Time
Trevecca University (Nashville, TN)

Nancy Matthews, Full Time Lead Instructor

Lead Instructor – Full Time
CCMA (EduMed Partners)

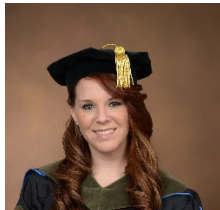


Tiffany Dragavon, A.A.S, CPhT, CAS, LXMO

Adjunct Instructor – As Needed
HTI/ NPTA (Houston)

Paola Molina PhD Molecular Biology

Consultant
MTSU University

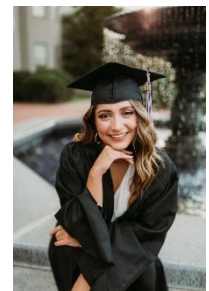


Kelli Binion, PhD Pharmacy

Consultant
East TN State University
Gatton School of Pharmacy

Chelsey Molina, M.S. Medicine

Consultant
Trevecca Nazarene University



Melissa Vale, B.S. HR Major

Part Time HR Business Partners
Tennessee Tech University



GRADUATION



2025